

AOC means Area of Concern; RSR means CT Remediation Standards Regulations. See the explanation of the types of cleanup criteria at the bottom of Enclosure 2b.

The nature and extent of Department of Environmental Protection (DEP) or Licensed Environmental Professional (LEP) roles are defined by the type of cleanup. See 1996 Insights on the LEP program.

If some previous investigative work has been done prior to development of the RSRs, chances are that it did not cover all the elements for demonstrating compliance by today's standards.

**GWPC** means Ground Water Protection Criteria; these are intended to protect people who use groundwater supplies (private or public wells) for drinking and bathing.

**NAPL** means free product or a soil layer that can release free product.

**GWYC** means Ground Water Volatilization Criteria; these are intended to protect people who might be exposed to off-gassed vapors from a contaminant plume into a building.

"Background" as used in the RSRs is "background concentration for groundwater", which is the concentration of the contaminant at the nearest upgradient location unaffected by the release (for many contaminants and sites this means zero).

**SWPC** means Surface Water Protection Criteria; these are intended to protect surface water bodies into which a plume of contaminated groundwater may discharge.

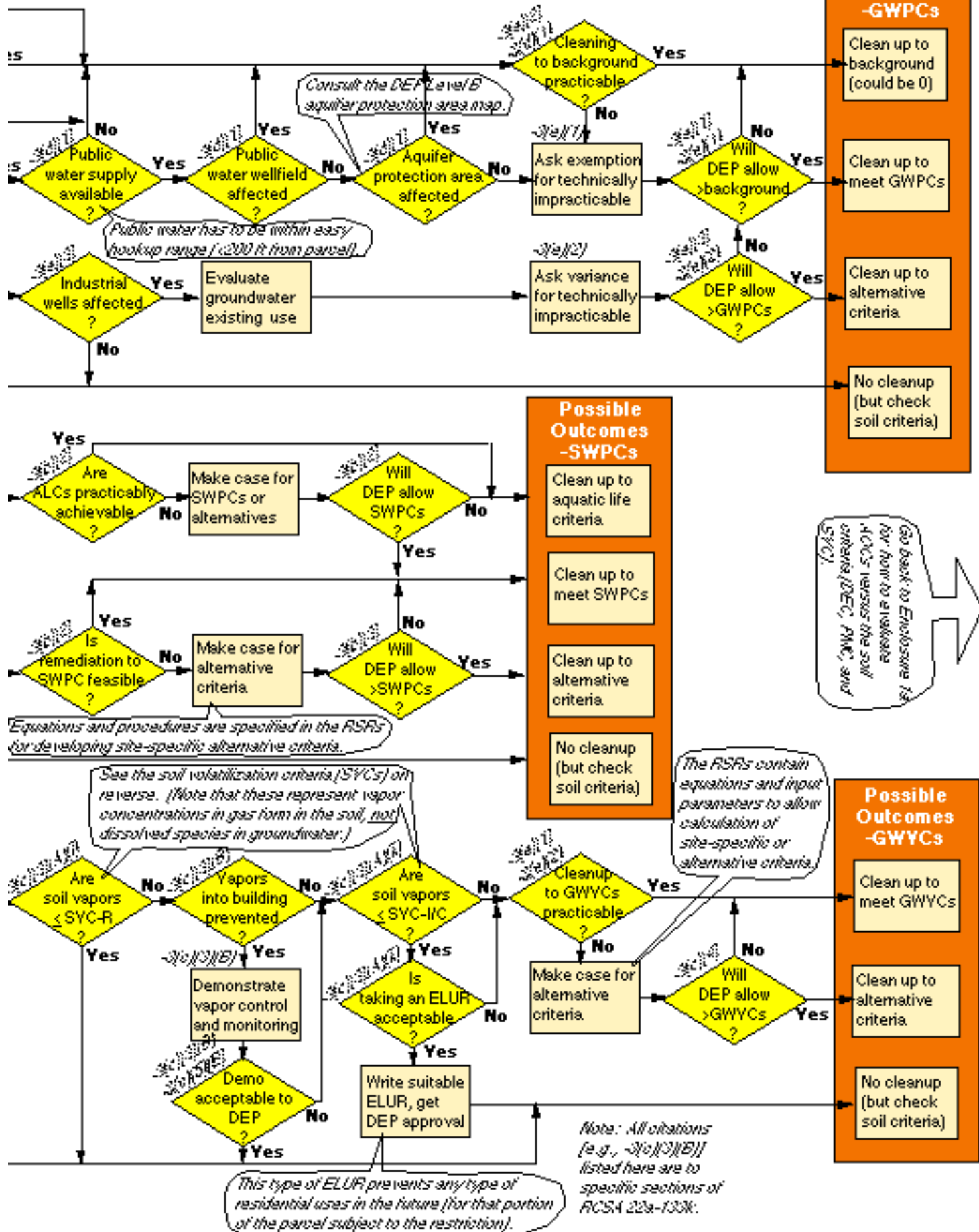
If the parcel does not abut a stream, wetlands or other water body, it is possible that groundwater contamination may be diluted down to background before it enters surface water at a distance from the source.

The depth to the water table (or to a contamination plume below the water table) is taken from the lowest floor level inside a building if the building is over the plume, otherwise from the lowest ground surface above the plume.

This type of ELUR requires that no building be constructed on the parcel over the plume (at least over the portion that exceeds GWYC), and possibly that adjacent parcels over the plume enter a similar ELUR on their property.



# ENCLOSURE 1b: PATHWAYS THROUGH THE CONNECTICUT B CLEANUP STANDARDS, WITH POSSIBLE OUTCOMES



\_\_\_\_\_

